

## Q K 1 4 1 C

**1PH, 115V – 60Hz**

### Application Range

Compressor Cooling	Natural	
Eva. Temp. Range	-10°C ~ 12°C	14°F ~ 54°F
Condensing Temp.	65°C max.	149°F max.
Return Gas Temp.	35°C max.	95°F max.
Discharge gas Temp.	115°C max.	239°F max.
Motor Wire Temp.	130°C max.	266°F max.

### Rated Performance

Capacity	9,900 Btu/h	2,901 Watts
Motor Input	900 W	
Current	8.1 A	
EER	11.0 Btu/W.h	3.22 W/W

### Compressor Data

Design	Rolling Piston Typed Rotary	
Displacement	14.1 cc/rev	0.86 in <sup>3</sup> /rev
Oil / Oil Charge	SUNISO 4GSI / 280 cc	
Weight	11.5 Kg	25.4 lb

### Motor Data

Motor Type	2 Pole Induction (PSC)	
Rated Output	760 W	
Winding Resistance (at 25°C)	Main 0.637 ± 7% Ω	Sub 1.778 ± 7% Ω
Voltage Range	98 V to 132 V	
Locked Rotor Amps.	47 Amps.	

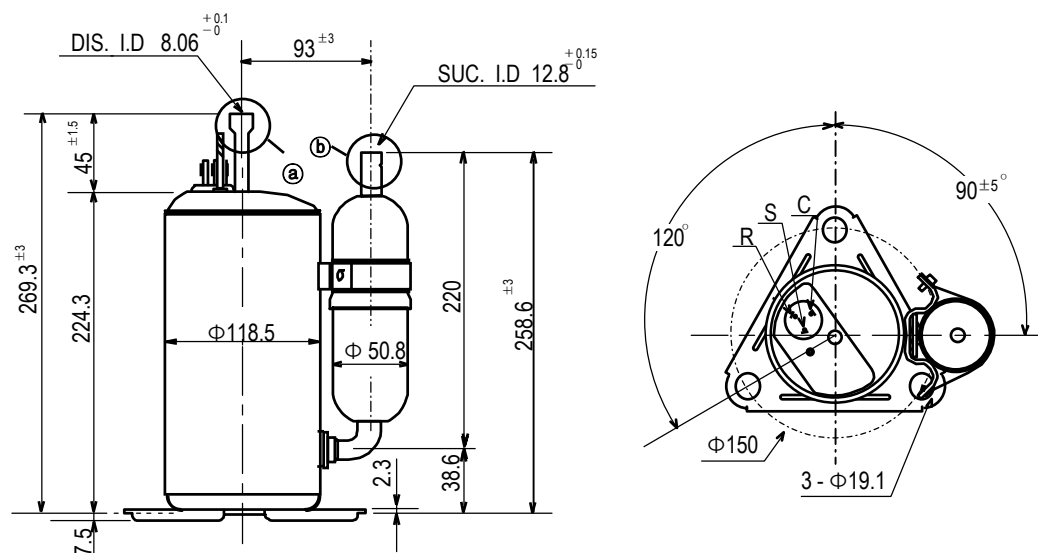
### Electrical Components

Running Capacitor	50 μF 250 VAC or 50 μF 370 VAC	
Overload Protector	MRA 12061 – 12026 ( Texas Instruments )	

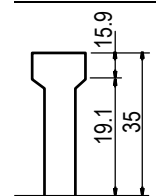
### Capacity Test Conditions

Evaporating Temp.	7.2°C	45°F
Condensing Temp.	54.4°C	130°F
Return Gas Temp.	35.0°C	95°F
Liquid Temp.	46.1°C	115°F
Ambient Temp.	35.0°C	95°F

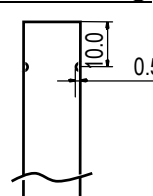
### Standard Dimensions



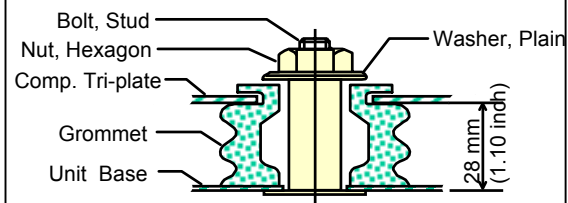
#### Detail of (a)



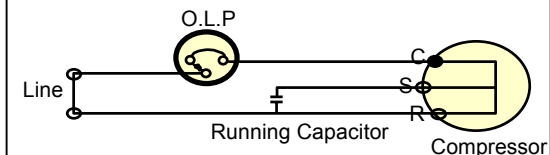
#### Detail of (b)



### Compressor Mounting



### Wiring Diagram



※ C.S.R mark is embossed on a Cover Terminal