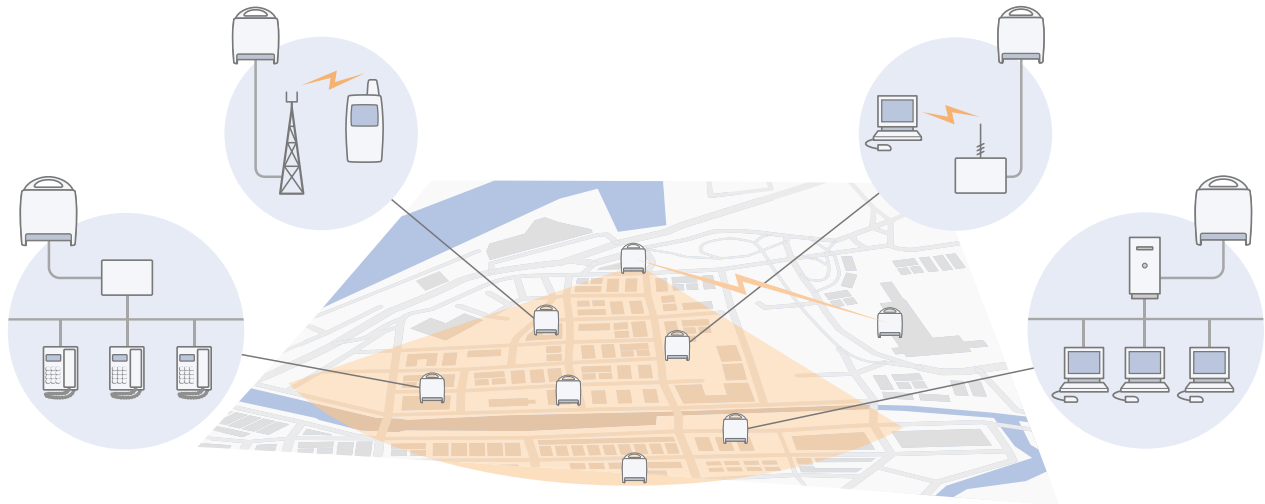


MINI-LINK BAS launch solutions

Risk-free wireless point-to-multipoint access



Ericsson's MINI-LINK BAS launch solutions offer a cost-effective and rapid route to get to market with a value-added mix of fixed broadband and traditional telephony, and to deliver mobile back-haul links, over a single access network.

Built on a modular architecture, the scalability and simplicity of our launch solutions enable you to implement point-to-multipoint networks quickly and extensively, and to exactly meet market demand - today and far into the future - giving you a headstart to profitability.

Key benefits:

- ♦ Reduces initial hub investment by up to 60%
- ♦ Achieve a fast time-to-revenue
- ♦ Provides superior coverage and capacity utilization
- ♦ Start services today at the same time as preparing for tomorrow

With initial hub investment reduced by up to 60% in comparison with most wireless broadband access systems, our launch solutions

minimize user connection cost with their smart hub configurations. This enables you to offer coverage in areas of low user density and get to market quickly with new revenue-generating services, meaning that you can achieve a rapid return on investment.

The launch solutions give you the flexibility to offer capacity ranging anywhere from 37Mbit/s to 220Mbit/s with up to 360° coverage at almost one-third of the cost. This, together with a completely modular architecture, means MINI-LINK BAS launch solutions give you complete freedom to match customer needs exactly - today and, with its simple expansion capabilities, well into the future.

This flexibility is achieved by integrating power-splitters into the outdoor parts of the hub unit. Splitting the power across several antennas makes it possible to offer full capacity and extended coverage, reducing hub investment significantly by enabling you to build complete networks with less site equipment needed.

About MINI-LINK BAS

The MINI-LINK BAS system delivers symmetrical capacity of up to 37 Mbit/s per carrier in the 24 GHz to 31 GHz frequency bands over an area of up to 5 km or more. Individual users have access to a wide range of services delivered over Ethernet, E1/T1 or ATM connections. Each customer - or network node - in the coverage area can be allocated capacity up to the full bandwidth on demand, a prerequisite for efficient use of bandwidth and successful service deployment.

The system bridges wireless and wireline networks and carries bandwidth-hungry IP services, such as high speed Internet/intranet, LAN interconnections and Virtual Private Networks (VPNs). This is further combined with traditional leased line services, to support PBXs, for example. With carrier class Quality of Service supported, each service level agreement can easily be customized for individual users.

MINI-LINK BAS consists of three components:

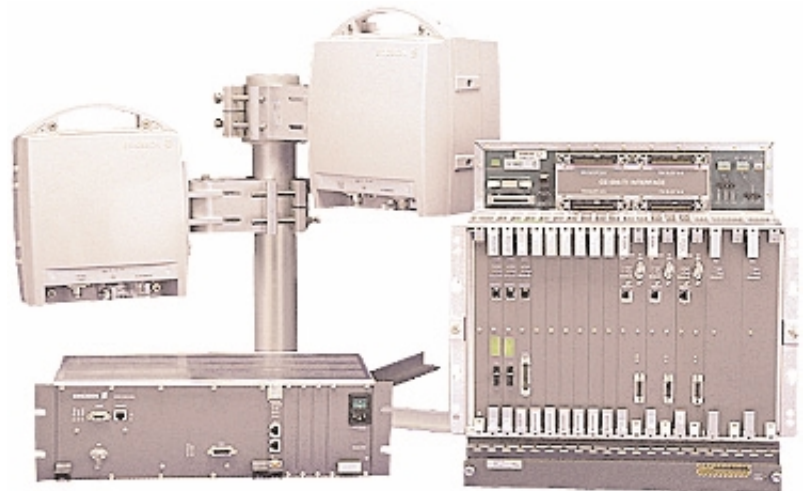
- ♦ **Access termination equipment** - customer premises equipment is divided into an indoor and outdoor unit. The outdoor unit consists of a radio and an antenna; the indoor unit is designed with plug-in interface units for full flexibility for different service requirements.
- ♦ **Management system** - integral management capabilities via a proven and powerful centralized operation and maintenance system that offers common equipment configuration, traffic cross-connection, alarm and performance management. It provides user-friendly, integrated control and supervision from a single terminal that supports all MINI-LINK equipment in networks of any size or topology.

About Ericsson

By 2001, Ericsson had already delivered more than 50 MINI-LINK point-to-multipoint systems worldwide, while our proven MINI-LINK point-to-point solution had been deployed in more than 110 countries.

Ericsson has the widest experience of broadband access and transport capability in the world, and is the leading supplier of fixed line multi-service network solutions. Ericsson is a partner that can be trusted, has local support in 140 countries, and continues to pioneer new technologies and techniques that help our customers and partners become and remain profitable.

- ♦ **Hub equipment** - the outdoor radio and antenna are connected to the indoor equipment via a single coaxial cable. The indoor unit handles modem and traffic functionality. Interconnection to the core network is over open standard interfaces.



Ericsson AB

Transmission & Transport Networks
SE-431 84 Mölndal, Sweden
Telephone +46 31 747 00 00
Fax +46 31 27 72 25
www.ericsson.com